

Learn Here

CLARK COUNTY PLACES HIGH PRIORITY ON LEARNING

Why do people land and live in Clark County? In part, because they are drawn to our excellent educational system.

Here, nearly **100,000 people** are preparing for a **bright future** in whatever career and life pathway they embrace.

Among our programs:

- Washington State University Vancouver, of a Tier 1 research university founded in 1989.
- Clark College, welcoming students of all ages and backgrounds since 1933.
- Eight K-12 public schools; Evergreen, Vancouver, Battle Ground, Camas, Ridgefield, Washougal, Hockinson and La Center.
- Private and faith-based schools; 44 schools, including King's Way Christian, Firm Foundation, Seton Catholic, Cornerstone Christian Academy, and numerous K-8 programs.
- Two statewide schools, supporting students with sight or hearing impairment.
- Early learning, multiple programs deeply rooted for 80 years.

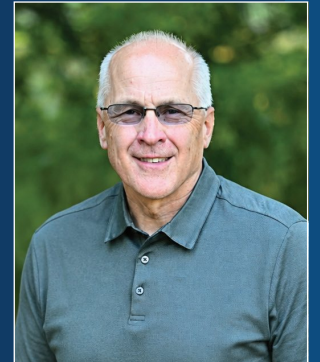
What really makes our educational system great are the **staff and volunteers** who invest deeply in student success.

From creating study buddies to walking school buses, leading booster groups to running levy programs, our community thrives because people invest passionately in the lives of our next generation.

That's why business leaders take pause each year to say **THANK YOU** to two-dozen exemplary volunteers. Few want or expect recognition. But they serve as shining examples to everyone.

LEARN HERE *Legacy Award*

We honor the relentless leadership of Jon Girod of Quail Homes, a builder of homes since 1989 and now a builder of the next generation of construction talent. In 2021, Girod saw a significant gap in vocational training that attracts teens to rewarding skilled trade jobs. His persistent work with school districts to launch programs, recruit teachers, build facilities and engage employers has resulted in renewed emphasis on career and technical education.



More than interesting coursework, students are rapidly gaining the hard and soft skills to design and build their own meaningful lives.

Today, 2,200 Clark County students are pursuing construction coursework, up from 100 just four years ago. Ten schools are building new or upgraded trade facilities.

We salute Jon Girod and the many who support his efforts.



BATTLE GROUND PUBLIC SCHOOLS



REBECCA OLSON

School counselor champions student wellness, guiding success through inclusive support and leadership.



BROOK TRANG

Early literacy leader connects students and families, building reading skills through community partnerships.

CAMAS SCHOOL DISTRICT



SHAUNA RUSE

District leader and foundation president expands student opportunities through strategic collaboration and service.



HEIDI BUHMAN-MCNELEY

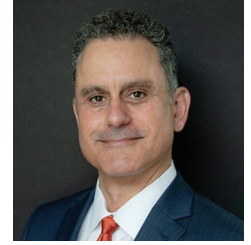
PTO leader revitalizes school community, boosting engagement, resources, and support for students and families.

CLARK COLLEGE



EARL FREDERICK

Culinary professor develops sought-after talent, blending education, mentorship and strong community partnerships.



SHARIF BURDZIK

Community advocate strengthens education access, supporting veterans and students through impactful partnerships.

EVERGREEN PUBLIC SCHOOLS



TRICIA HARDING

Language access coordinator expands equity, connecting multilingual families to critical educational opportunities.



JAMIE HELM

Volunteer leader improves attendance, guiding families and students toward stronger engagement and success.

FIRM FOUNDATION CHRISTIAN SCHOOL



SHERINA SOURS

Teacher and coach inspires students, modeling leadership, faith and dedication in school and community.



JENNIFER DUKE

Dedicated volunteer uplifts school community, supporting students and staff with consistent positivity and care.

HOCKINSON SCHOOL DISTRICT



TASHA HILL

Behavior specialist supports students, strengthening social-emotional growth through proactive, collaborative strategies.



DEREK HUEGEL

Project manager leads skilled trades center, coordinating design, construction and execution with expertise.

RIDGEFIELD SCHOOL DISTRICT



STEPHANIE GOAD

Assistant principal leads inclusive schools, supporting students through steady, collaborative, student-centered leadership.



TYLER KING

Detective partners with schools, strengthening safety, trust, and student mentorship across the community.

VANCOUVER PUBLIC SCHOOLS



ERICK HOFFARTH

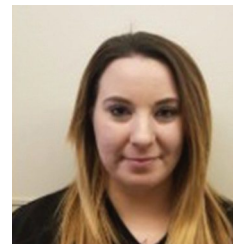
School leader fosters trust and accountability, championing whole-child success through servant leadership.



DIANA AVALOS-LEOS

Community leader builds belonging, empowering youth and families through inclusive programs and advocacy.

WA SCHOOL FOR THE DEAF



AMI JUSTICE

Lead Cook nourishes students and staff through compassionate service, reliability, and meaningful daily connections.



CAROLE KAULITZ

Veteran specialist supports deaf students, providing training, advocacy, and decades of dedicated service.

WA STATE SCHOOL FOR THE BLIND



BILLIE JO THOMAS

School psychologist supports whole-child success, coordinating services and fostering inclusive, collaborative environments.



OLE HELGERSEN

Volunteer enhances student safety, mobility, and access through hands-on service and technical expertise.

WASHOUGAL SCHOOL DISTRICT



KENNETH KULK

Transition program teacher empowers students with disabilities, building independence through life skills and careers.



BRITNEY JOHNSON

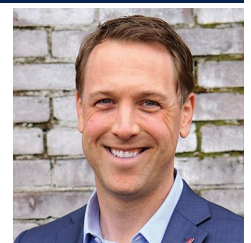
Booster leader aligns community support, fundraising, and engagement to expand student opportunities.

WSU VANCOUVER



DR. GUNJAN GAKHAR

Biology professor advances inclusive STEM education, inspiring persistence through innovative teaching and community partnerships.



MIKE BOMAR

Economic strategy leader connects education to careers, strengthening regional workforce pipelines and student opportunities.